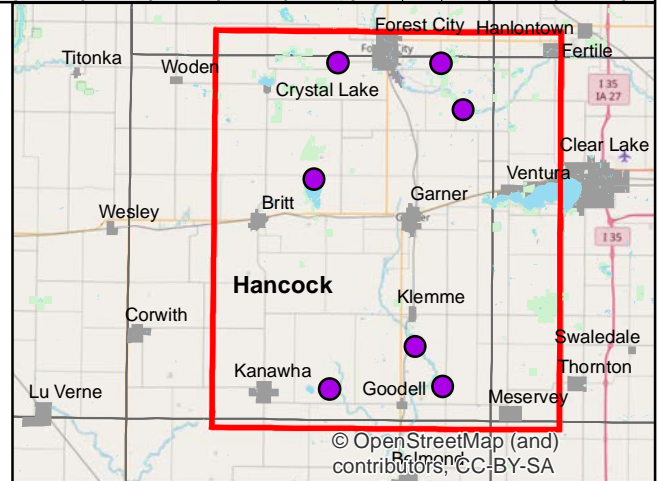
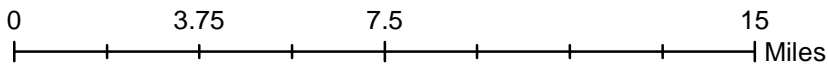
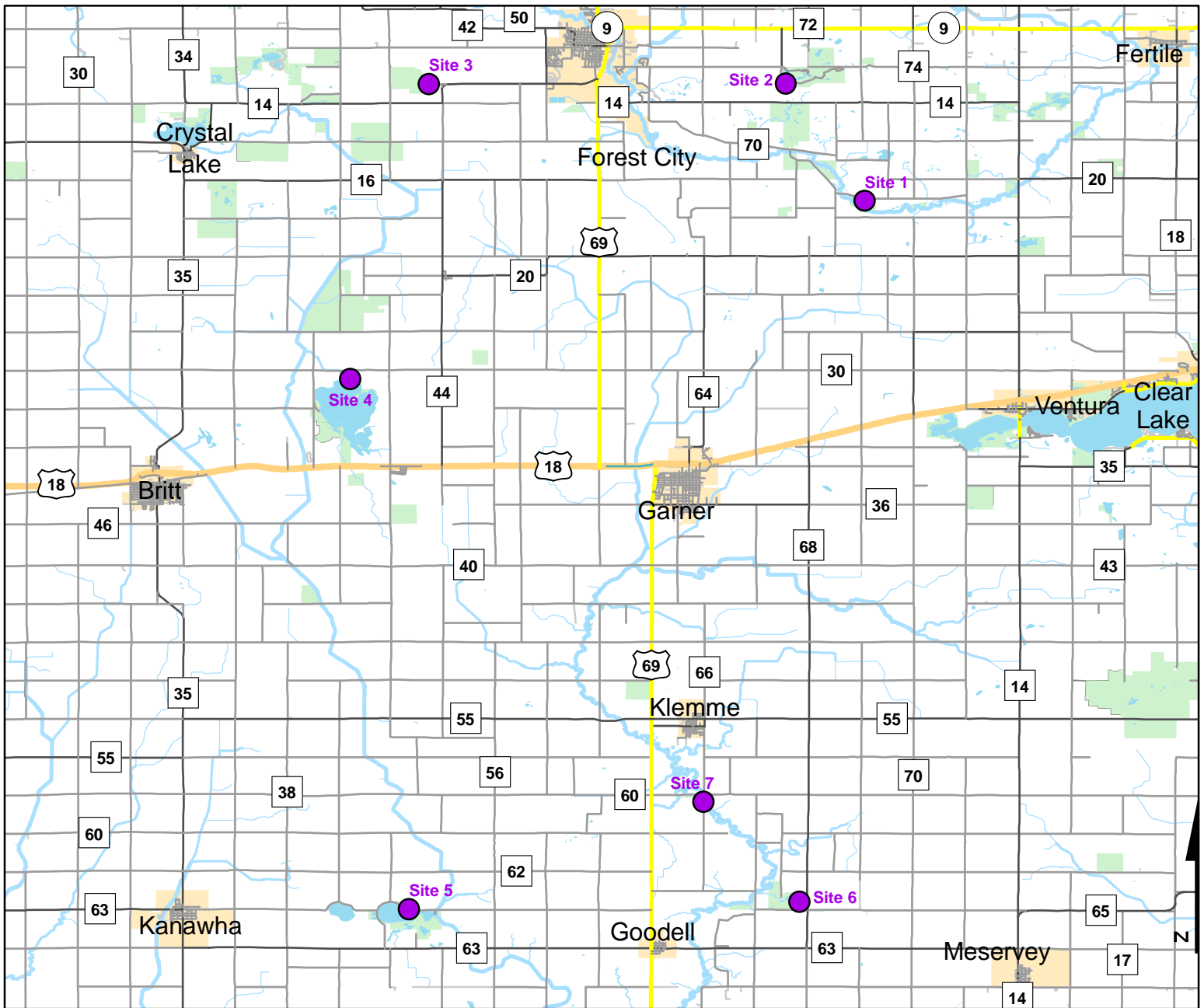




Volunteer Wildlife Monitoring Program (VWMP) Frog and Toad Survey

Route ID: 237 County: Hancock

Click for Google Maps to Site 1: <https://www.google.com/maps/dir/?api=1&destination=43.2048150098,-93.5359984458>

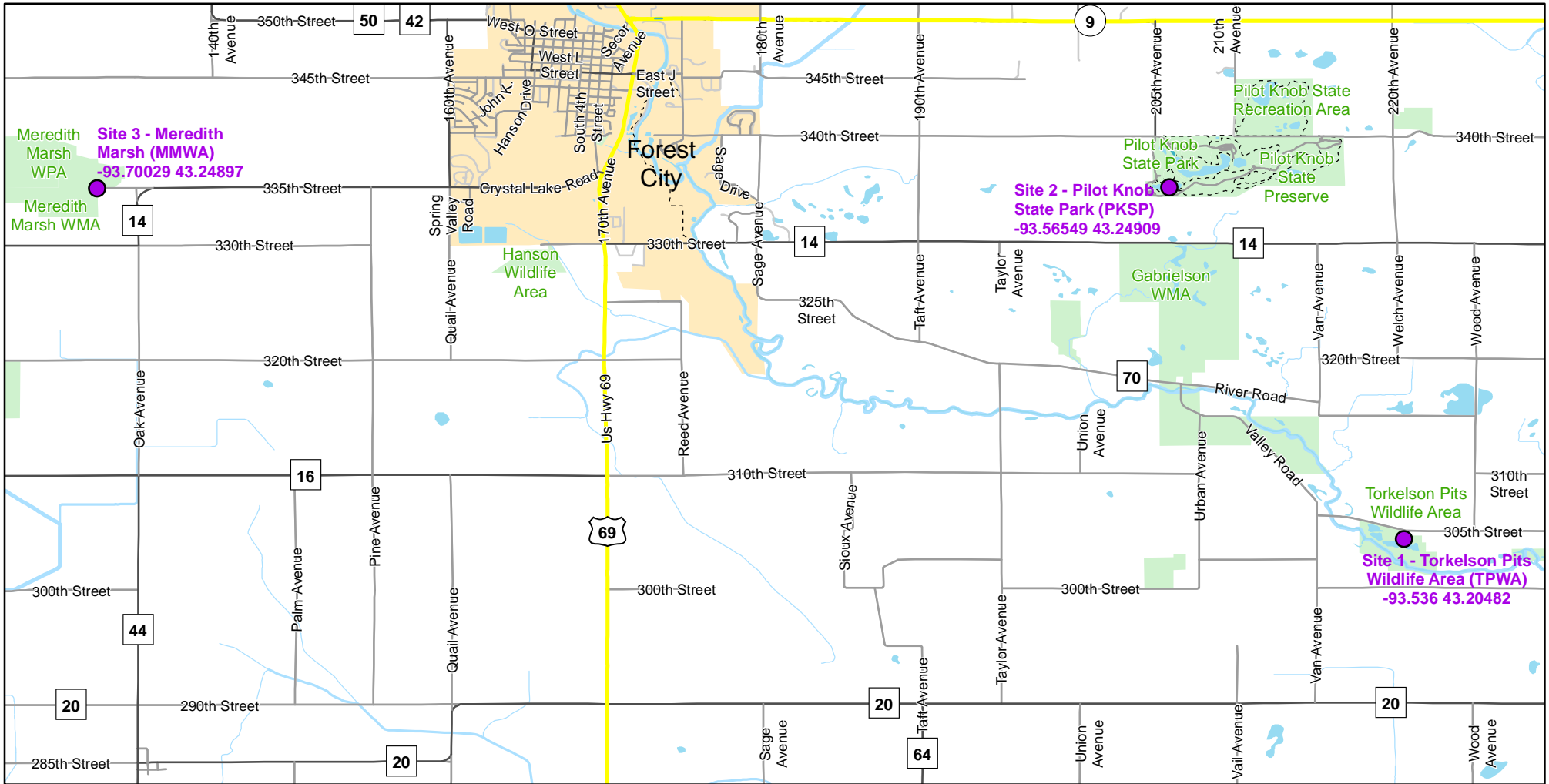




Volunteer Wildlife Monitoring Program (VWMP) Frog

Route ID: 237 County: Hancock

Click for Google Maps to Site 1: <https://www.google.com/maps/dir/?api=1&destination=43.2048150098,-93.5359984458>

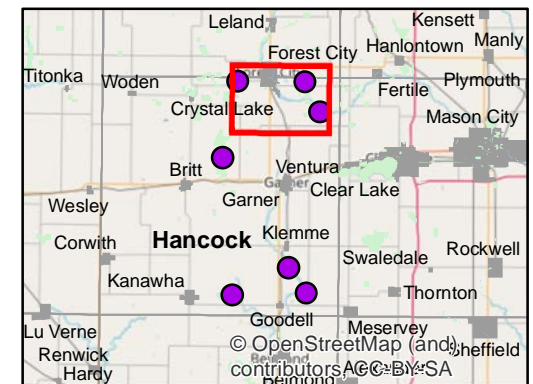
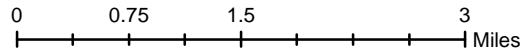


Enlarged View of Site 2



Legend

----- Trails

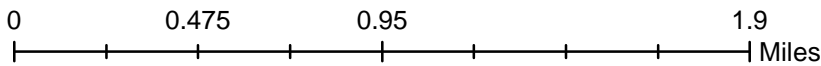
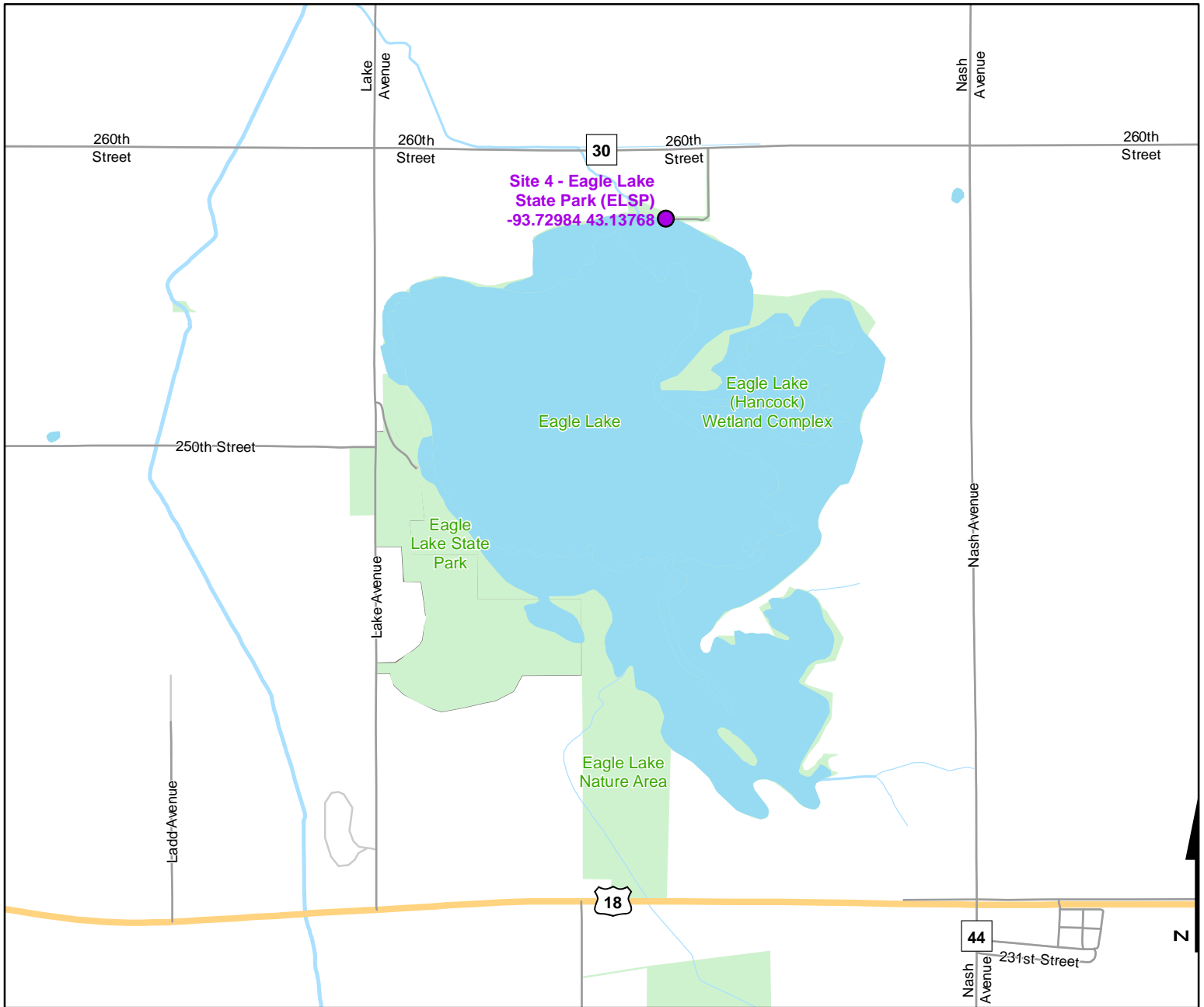




Volunteer Wildlife Monitoring Program (VWMP) Frog and Toad Survey

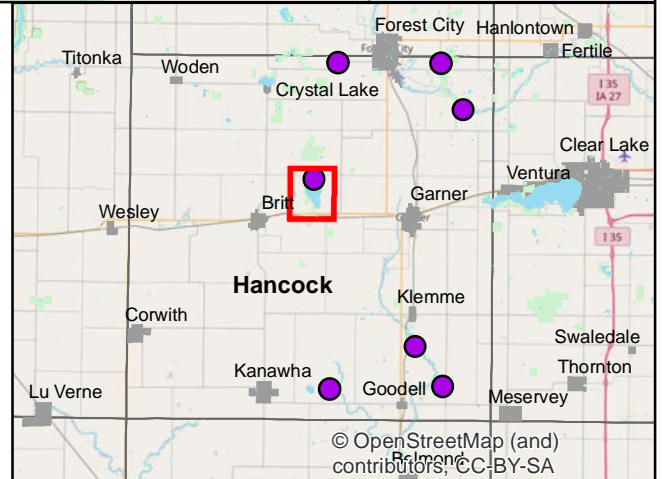
Route ID: 237 County: Hancock

Click for Google Maps to Site 1: <https://www.google.com/maps/dir/?api=1&destination=43.2048150098,-93.5359984458>



Legend

----- Trails

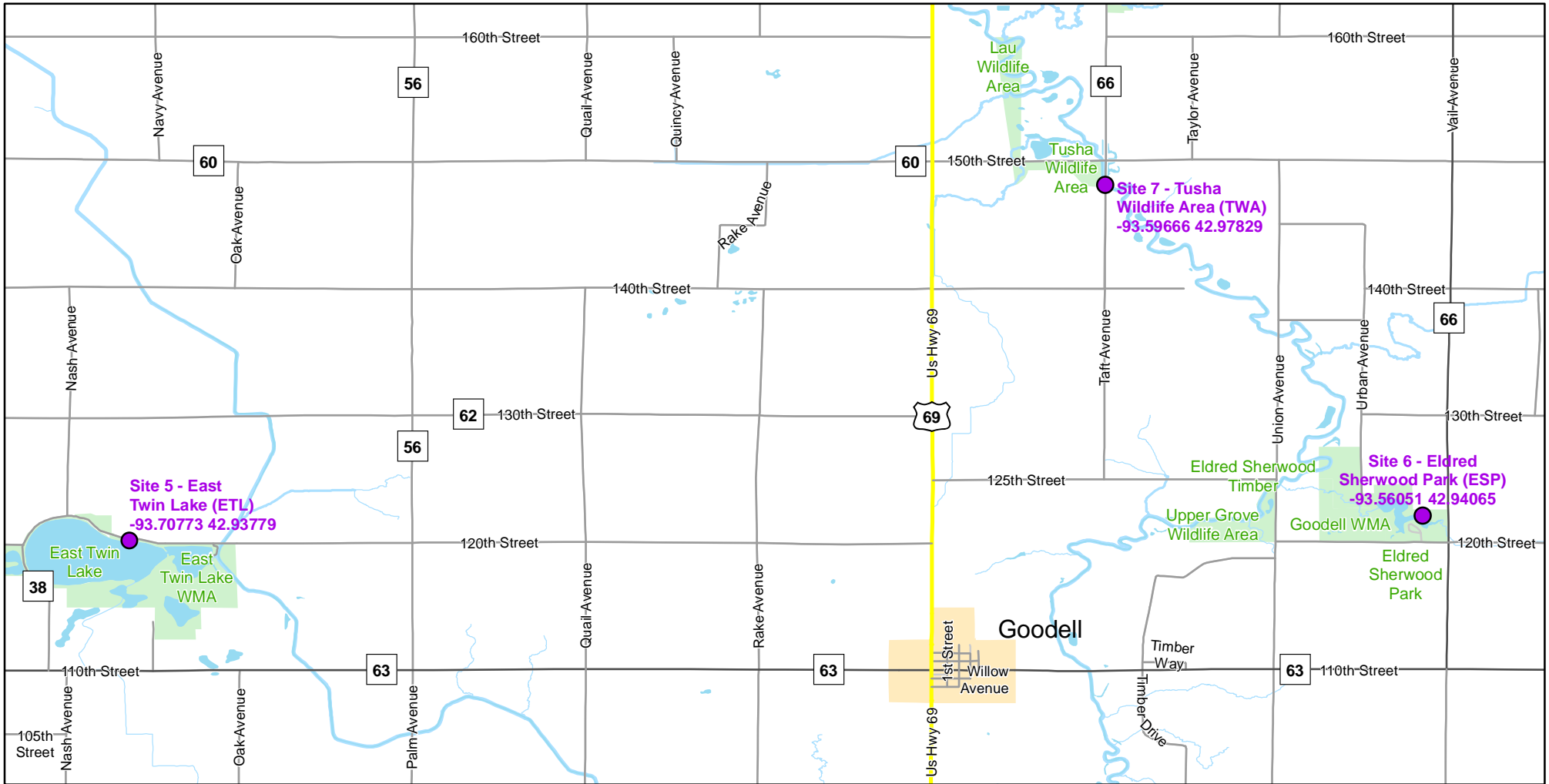




Volunteer Wildlife Monitoring Program (VWMP) Frog

Route ID: 237 County: Hancock

Click for Google Maps to Site 1: <https://www.google.com/maps/dir/?api=1&destination=43.2048150098,-93.5359984458>

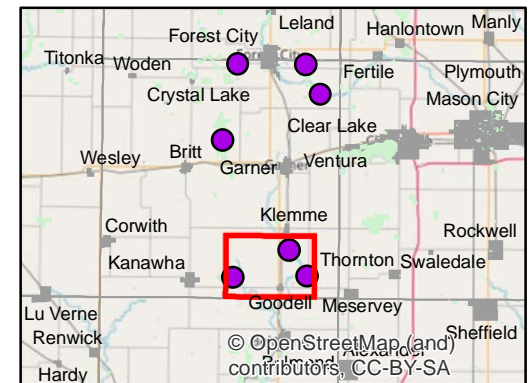
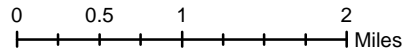


Enlarged View of Site 6



Legend

----- Trails





Frog and Toad Call Survey Route Description

Route ID **237**

Established: 2007

Site Number	Name	County	Latitude	Longitude	Directions
1	Torkelson Pits Wildlife Area (TPWA)	Hancock	43.204815	-93.5359984	At Torkelson Pits WA off of 305th St, parking area north of the lake
2	Pilot Knob State Park (PKSP)	Hancock	43.2490932	-93.5654952	At Pilot Knob State Park, on trail near Dead Man's Lake on the southern trail
3	Meredith Marsh (MMWA)	Hancock	43.2489687	-93.7002953	At Meredith Marsh WMA, entrance is at the corner of 335th St and Oak Ave
4	Eagle Lake State Park (ELSP)	Hancock	43.1376746	-93.7298379	Site is located on the north side of Eagle Lake at the Boat Access area.
5	East Twin Lake (ETL)	Hancock	42.9377858	-93.7077278	Parking area is off of 120th St on the north side of lake
6	Eldred Sherwood Park (ESP)	Hancock	42.9406455	-93.5605069	Listening point from boat ramp at the NE corner of lake
7	Tusha Wildlife Area (TWA)	Hancock	42.9782933	-93.5966606	On Taft Ave, at the bridge just south of 150th St intersection over East Branch of Iowa River. At the corner of Tusha WA